

# SINFONIA

Amilcare Ponchielli (1834-1886) Op. 106  
Versione storica a cura di Emiliano Gusperti

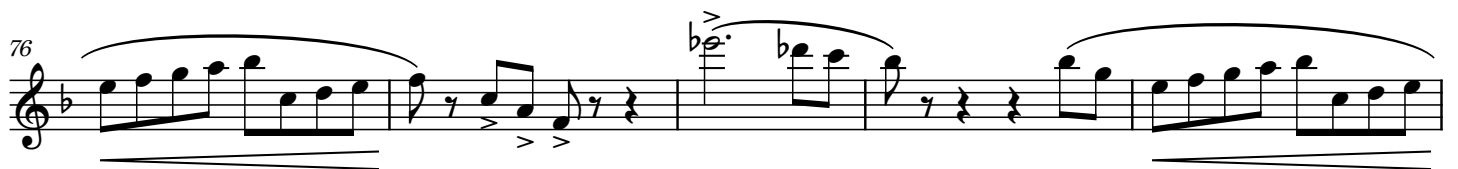
The image displays a musical score for a piano piece, divided into two main sections: 'Andante un poco mosso' and 'Allegro vivo'.

**Andante un poco mosso (Measures 1-21):**

- Measures 1-4:** The piece begins with a treble clef, a key signature of one flat (B-flat), and a common time signature (C). The tempo is 'Andante un poco mosso'. The dynamics are *ff* (fortissimo) and *pp* (pianissimo).
- Measures 5-8:** The melody continues with a *pp* dynamic.
- Measures 9-13:** The melody continues with a *ff* dynamic and a *cresc.* (crescendo) marking.
- Measures 14-21:** The piece ends with a *ff* dynamic and a *cresc.* marking.

**Allegro vivo (Measures 22-47):**

- Measures 22-26:** The tempo changes to 'Allegro vivo'. The key signature changes to one sharp (F-sharp). The dynamics are *ff* and *pp*.
- Measures 27-31:** The melody continues with a *ff* dynamic and a *cresc.* marking.
- Measures 32-37:** The melody continues with a *pp* dynamic and a *cresc.* marking.
- Measures 38-43:** The melody continues with a *ff* dynamic and a *cresc.* marking.
- Measures 44-47:** The piece ends with a *ff* dynamic and a *cresc.* marking.



115 *pp*

121 *cresc.*.....

126 *ff tutta forza*

131

137

143 *(p)* *ff* *pp cresc.*

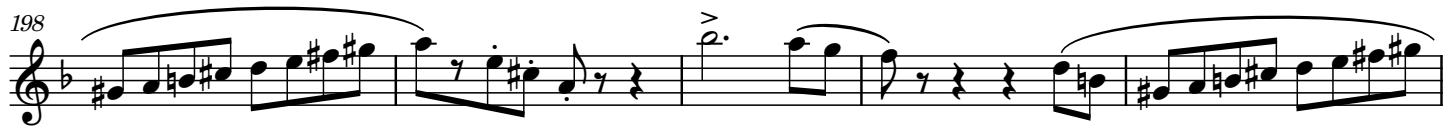
150 *ff*

157 *f*

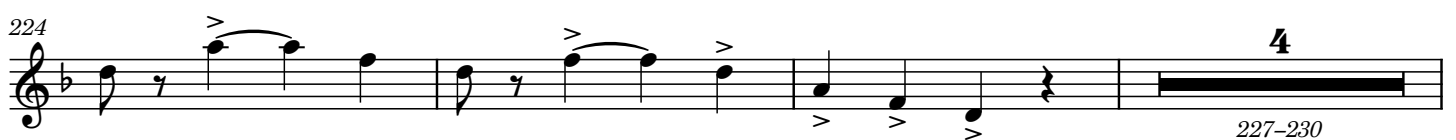
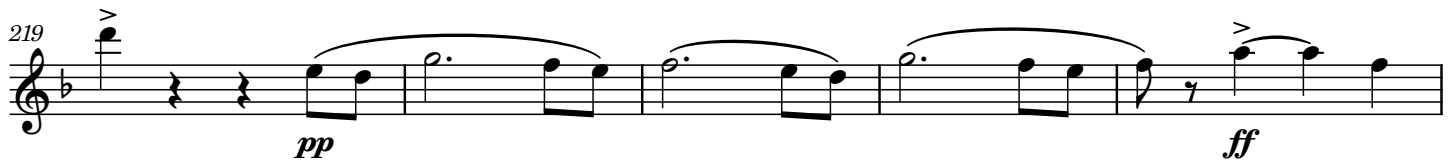
163 *ff*

169

174 *pp*



deciso assai



231 *(f)* > *(pp)* *p cresc.....* 1

238

245

250 *ff* *(dim.)*

255 Maggiore *pp* *pp*

261

267

273 9 276-284 *p*

287

293 *(cresc.)*

297 *ff*

302

308

313

*ff* *3* 316-318 *p (cresc.)* .....

321

*ff*

327

*1* *(p) cresc.* .....

333

*(ff)*

339

343

*ff*

347

352

*1*

357